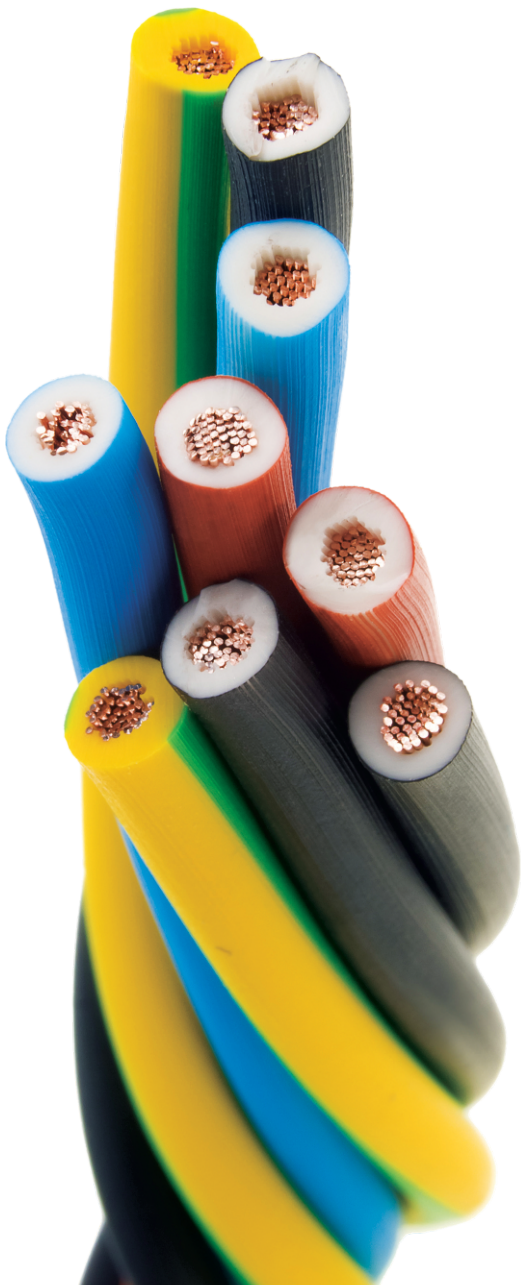




ONE Click CABLE MEASUREMENT SYSTEM CABLE Quickie



Profile Projector



TRADITIONAL MEASUREMENT SYSTEMS

- Operator to Operator Variation
- Point-by-Point measurement takes time
- Setup Time is high
- Skilled Operator Required
- Wrong data entry by Operators

CABLE QUICKIE



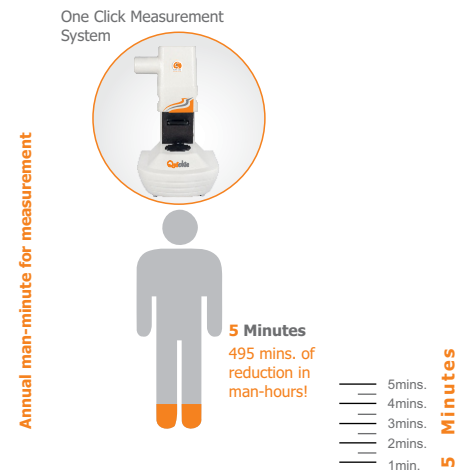
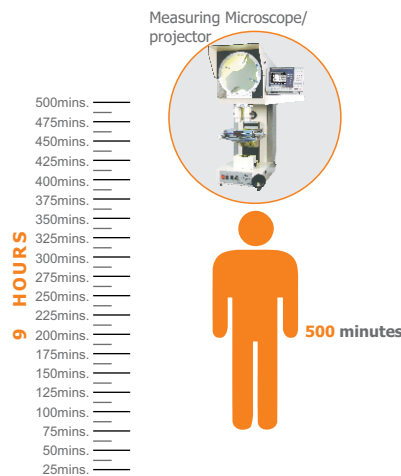
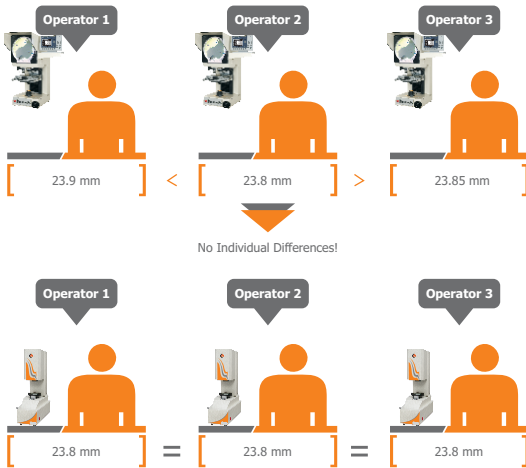
ADVANTAGES of Cable Quickie

- No operator to operator variation
- Immediate results within seconds
- Automatic Report Generation
- No skill required

Reduced MEASUREMENT TIME

7 mm

Different results among different operators...



Improved Quality

No Cross Hair Probing Error

No Measurement Error

No Point Selection Error

Cost Efficiency

No Location Error

No Alignment Error

No Orientation Error

Shorter Measurement Time

No Focussing Error

No Reporting Error

No Edge Selection Error

Features At A Glance

Insulator Thickness Over Every Strand

Minimum Insulator Thickness

Average Insulator Thickness

Maximum Insulator Thickness

Cable Outer Diameter

Inner Diameter

Concentricity

Insulator Area

Eccentricity

Ovality

Circularity

Tolerance Settings

Width Deviation Analysis

✦ **Master calibration profile for slip gauges and ring gauges**

✦ **Computer interface**
(measured reading can be directly stored in excel and gives the required results)

Customized Report

Generation

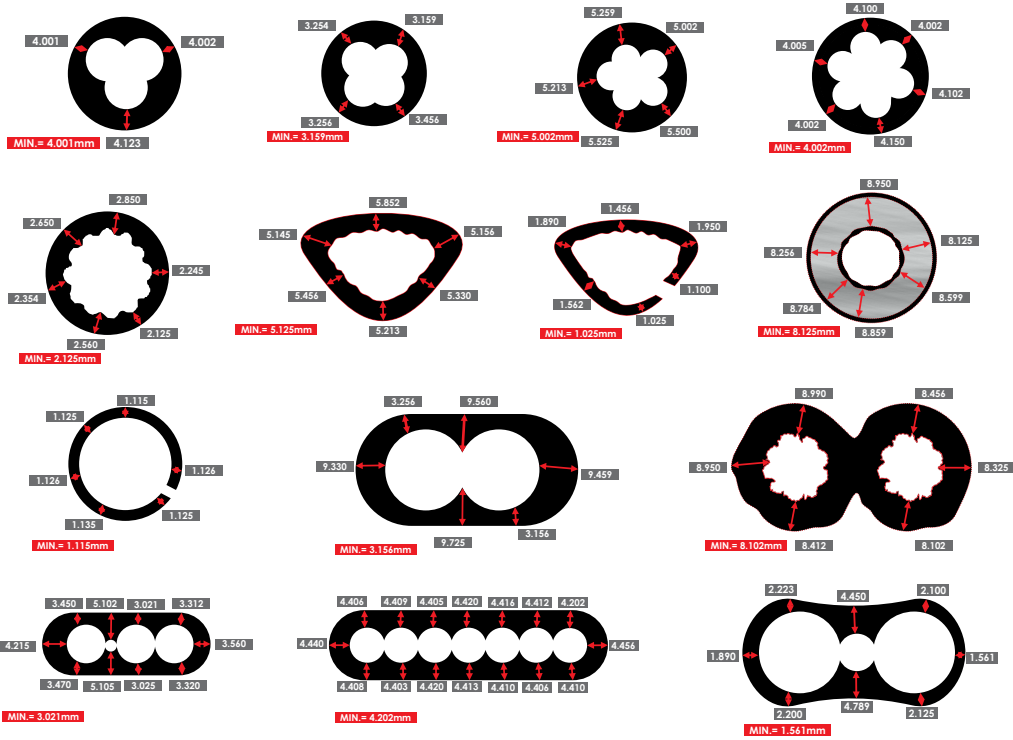
IEC 60811-201, 202 & 203

EN 60811-1-1 Reports

IS: 10810-6 Reports

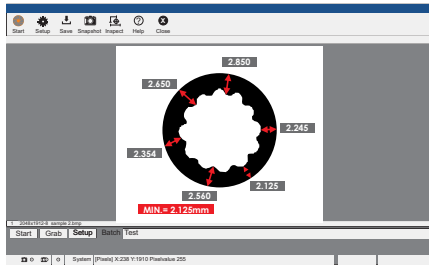


SVI-CQ-64



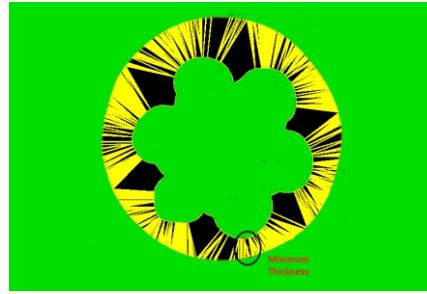
MEASURING SOFTWARE

SOFTWARE DESKTOP



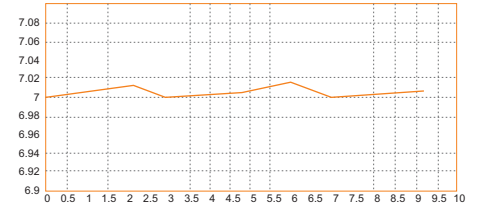
Comprehensive Software Desktop with all the measuring functions just a click away. Simultaneously with the measurement you will have the result display of the measurement in front of you on the software desktop. The core of product is the simple, visual part view window with convenient tool bars that define the measurement process.

MORE THEN 10,000 pts



An advance feature to analyze the width at more than 10,000 points on the sample helps in understanding the width variation in the complete sample.

INTEGRATED SPC



Inbuilt Trend Monitoring and Statistical Evaluation of any measured quantity is a prominent feature of the software.

This includes: The Trend Analysis of any measured variable with the different parts which is important to understand the variation in the batch being inspected.

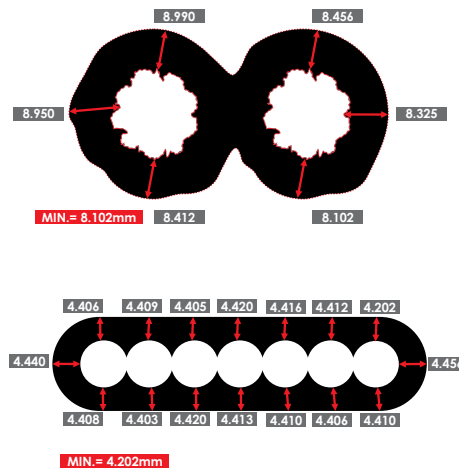
REPORT GENERATION

Part Details		Operator Details	
Lab No.	Cable	Operator Name	Pawan
Sample No.	CC-1243	Operator Id.	12
Customer Name	Sigcon	Customer reference	batch 4
Address	IIT, MIDC, Ambala Cantt		

Inspection Results	Value	Remarks
Minimum Thickness	0.736	
Thickness at point no. 1	0.898	
Thickness at point no. 2	0.754	
Thickness at point no. 3	0.893	
Thickness at point no. 4	0.826	
Thickness at point no. 5	0.900	
Thickness at point no. 6	0.800	
Average Thickness	0.829	

Fully customizable report format with color coded Pass /Fail for tolerance parts. Confirm to your ISO specifications and send data directly to an ASCII, Excel or any SPC program.

RESULT DISPLAY ON IMAGE



TOLERANCE TYPES

Supports more than 5 types of tolerance settings with display in color coded pass and fail output. If there's a part or feature that doesn't measure up, you will know it immediately. All out of tolerance features displayed in red.

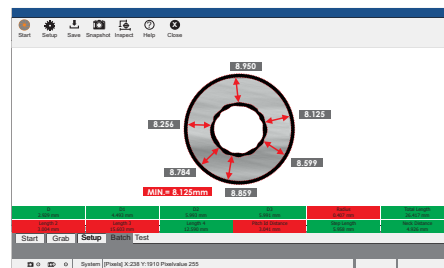
- Circularity
- Concentricity
- Eccentricity
- Ovality
- Cross-sectional Area

WIDTH DEVIATION ANALYSIS



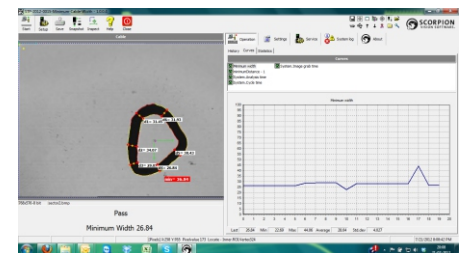
An advance feature to analyze the width at more than 10,000 points on the sample helps in understanding the width variation in the complete sample.

COLOR CODED TOLERANCE



The software provides the flexibility to make new programs for special types of cable samples which are not part of standard software menu. The new software can be easily linked to the data management module for generating reports according to the any latest standard.

EASY TO do PROGRAMMING

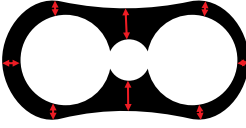


The software provides the flexibility to make new programs for special types of cable samples which are not part of standard software menu. The new software can be easily linked to the data management module for generating reports according to the any latest standard.

MEASURING-SOFTWARE

BATCH REPORTING

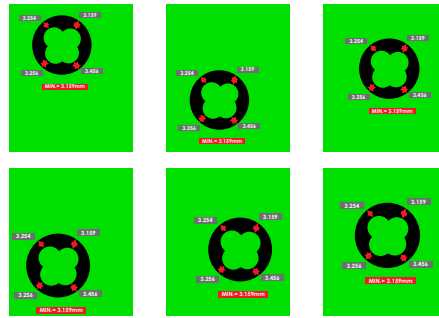
Part Details		Operator Details	
Sample Code	0	Operator Name	
Sample Description	0	Operator I.d	
Customer Name	0	Date & Time	
Address	0		



Inspection Results	Thickness 1	Thickness2	Thickness3	Thickness4	Thickness5	Thickness6
	1.10	0.99	1.16	1.34	1.30	1.24
	1.10	0.99	1.16	1.34	1.30	1.24
	1.10	0.99	1.16	1.34	1.30	1.24
	1.10	0.98	1.15	1.35	1.31	1.21
	1.10	0.98	1.15	1.35	1.31	1.21
	1.10	0.98	1.15	1.35	1.31	1.21

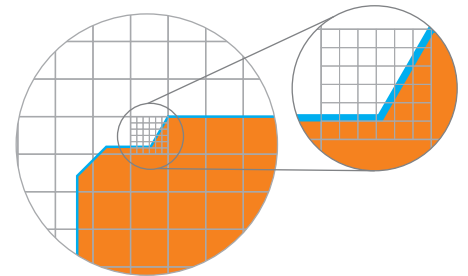
Reports of multiple cable samples are possible in one excel sheet which is very much helpful for comparative analysis.

AUTO ALIGNMENT



The location and the orientation of the part are automatically adjusted. There is no need of manual alignment or preparation of any jig or fixture to start the measurement. So keep the sample any where and press inspect button.

1/100 Pixel Image Processing

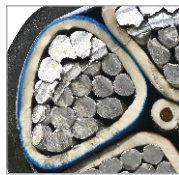


With Sub-pixel Image Processing you can measure by one hundredth or less of a pixel which results in very good accuracy of measurements.

DUAL CAMERA



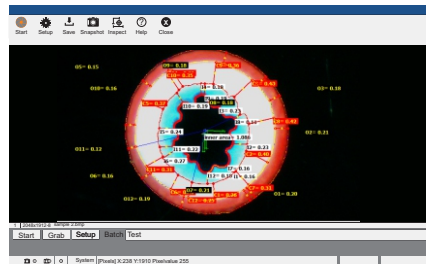
Field of View: 120mm



Field of View: 30mm

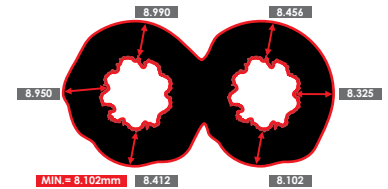
With dual camera configuration you can measure bigger cable samples in one F.O.V. (magnification) and small samples details in other (magnification). There by maintaining accuracy in both.

COLOUR MEASUREMENT



The software is capable for different types of colour measurements. Also the colour matching of standard RAL colour is also possible with optional colour matcher module. You can analyse variation of colour in different batch.

PROFILE TOLERANCE



The software provides the flexibility to make new programs for new parts which are not part of standard software menu. The new software can be easily linked to the data management module for generating reports according to the any latest standard.

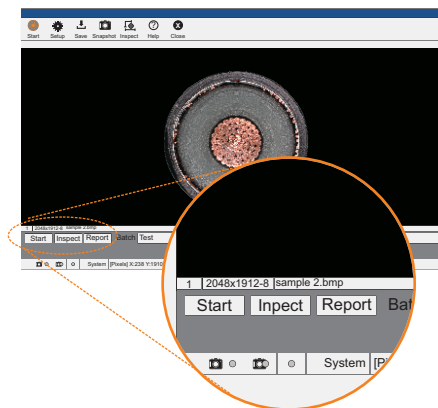
COMPATIBILITY WITH PNEUMATIC CONTROL



Foot Switch

Our software is compatible with Pneumatic control system, with help of RS232 interface. Also we can collect the foot switch or an alarm system with the serial interface.

THREE STEP INSPECTION



STEP 1: START

Place the sample on the machine

STEP 2: INSPECT

Click inspect to get results

STEP 3: REPORT

Click Report to get all results in excel or any other desired format.

REPORTING FORMATS

EN60811-1-1, IS10810-1-1
IEC 60811-201, 202 & 203

Any kind of reporting format is possible according to the standards available world over.

SIPCON INSTRUMENT INDUSTRIES 280, HSIDC-IGC, INDUSTRIAL AREA, SAHA		
Part Details		Operator Details
Part Name	Cable	Operator Name
Part No.	CC-1243	Operator I.d
Customer Name	SIPCON	Customer reference
Address		Make Sipcon
280, HSIDC-IGC, INDUSTRIAL AREA, SAHA		
Inspection Results		
Parameter	Value	Remarks
Thickness at point no. 1	3.236	
Thickness at point no. 2	3.687	
Thickness at point no. 3	2.924	
Thickness at point no. 4	3.134	
Thickness at point no. 5	2.918	
Thickness at point no. 6	2.783	
Minimum Thickness	2.780	
Maximum Thickness	4.431	
Average Thickness	3.372	
Checked By		Inspected By

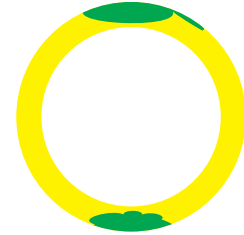
One Sample Report

SIPCON INSTRUMENT INDUSTRIES 280, HSIDC-IGC, INDUSTRIAL AREA, SAHA			
INSPECTION REPORT			Sample no.:
Size (sqmm)	4.0 Sqmm	Yellow	Type of PVC:
Supplier Name	SIPCON		Tc No /Batch no:
Machine:	CABLE QUICKIE		Date & Shift:
S.NO.	Maharastra	UNIT	OBS VALUE
THICKNESS MEASUREMENT			
1	Thickness of point at 0°	mm	0.688
2	Thickness of point at 60°	mm	0.761
3	Thickness of point at 120°	mm	0.772
4	Thickness of point at 180°	mm	0.704
5	Thickness of point at 240°	mm	0.713
6	Thickness of point at 300°	mm	0.912
	Outer Diameter	mm	4.140
7	Thickness of point at 0°	mm	1.136
8	Thickness of point at 60°	mm	0.803
9	Thickness of point at 120°	mm	0.719
10	Thickness of point at 180°	mm	0.737
11	Thickness of point at 240°	mm	0.813
12	Thickness of point at 300°	mm	0.801
	Outer Diameter	mm	4.087
13	Thickness of point at 0°	mm	0.730
14	Thickness of point at 60°	mm	0.771
15	Thickness of point at 120°	mm	0.806
16	Thickness of point at 180°	mm	0.829
17	Thickness of point at 240°	mm	0.819
18	Thickness of point at 300°	mm	0.693
	Outer Diameter	mm	4.088
4	Minimum Thickness	mm	0.688
5	Maximum Thickness	mm	1.136
6	Average Thickness	mm	0.789
7	Average Outer Diameter	mm	4.105
9	Concetricity	%	75.439
Note: This is a computer generated statement & hence does not require any sign			

Three Samples in One Report

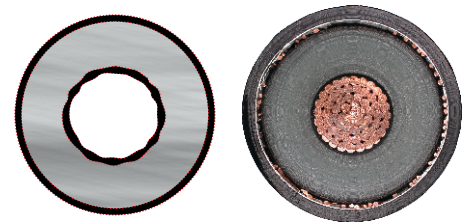
OPTIONAL MODULES

Color Percentage Module



The colour percentage modules is a very hand add-on, which measure the percentage of both the colours present in the wire. The reporting format is also fully customizable e.g. a yellow green sample when inspected on the machine within one click the complete diameter, ovality measurements are done along with the percentage value of both colour presents

XLPE Cable Analysis Module



With XLPE Module we can measure any diameter of the cable sample (according to machine capability), Total eighteen measurements are performed for the sample; 6 in outer insulation thickness, 6 in insulation thickness and 6 in inner conductor shield thickness. The report consists of all the 18 thickness measurements along with Max. and Min. in each area. Average thickness ovality, diameters results are all possible.

SIPCON INSTRUMENT INDUSTRIES 280, HSIDC-IGC, INDUSTRIAL AREA, SAHA			
Thickness Measurements			
Ref	: 280-SD		
CUSTOMER	: SIPCON		
P.O.No. & Date	: 89/12 & 23/12/2015		
Specification	: XLPE Cable		
Drum No.	: 5569/12		
	Date of test: 24/12/2015		
	Conductor Shield	Insulation Thick.	Insulation Shield
All the dimensions in mm	3.131	21.880	1.828
	2.999	21.274	1.987
	2.816	21.035	2.019
	2.660	22.065	1.951
	2.673	22.424	1.945
	2.981	22.611	1.873
SPD Thickness			
Non.	2.877	21.881	1.934
min	2.660	21.035	1.828
max	3.131	22.611	2.019
Eccentricity %	15.047	6.970	9.439
% Quality of Core	89.99	89.27	0.805
Tested By		Checked By	

XLPE Sample Report

SIPCON INSTRUMENT INDUSTRIES 280, HSIDC-IGC, INDUSTRIAL AREA, SAHA			
Thickness Measurements			
Ref	: 280-SD		
CUSTOMER	: SIPCON		
P.O.No. & Date	: 89/12 & 23/12/2015		
Specification	: XLPE Cable		
Drum No.	: 5569/12		
	Date of test: 24/12/2015		
Inspection Results			
Thickness1	Thickness2	Thickness3	Thickness4
Thickness5	Thickness6	Inner Diameter	outer diameter
1.10	0.99	1.16	1.34
1.10	0.99	1.16	1.34
1.11	0.98	1.15	1.35
1.1	0.97	1.17	1.34
1.09	0.99	1.18	1.33

Comparative Report of Multiple Sample

Note: The above modules will work with top light which is optional.

Technical Specifications

Model	SVI-CQ-16	SVI-CQ-36	SCI-CQ-48	SVI-CQ-64	SVI-CQ-120	SVI-CQ-144
Max. Sample Diameter	16mm	36mm	48mm	64mm	120mm	144mm
No. of Cameras	1					
Camera	5MP Industrial Camera (optionally upto 16MP)					
Accuracy	±10µm			±15µm		
Repeatability	±5µm			±10µm		
Least Count	0.1µm					
Illumination-Surface (optional)	LED					
Illumination-Countour	LED					
Focusing Range	Optional(30mm)					
Power Supply	110/220V @ 50Hz ±5%					
Machine Weight	25Kgs.	35Kgs.	42Kgs.	50Kgs.	80Kgs.	95Kgs.
Interface	USB/Ethernet					
Optional Hardware	Laptop/PC with WIN7/8 operating system					
Base Platform & Column	Metal					
Auto Alignment	360° Compensation					
Max. Measurement Point	10,000					
XLPE Cable	Optional					
Color percentage Module	Optional					
Touch Screen Monitor	Optional					
Table	Optional			N.A. (Floor Standing)		
Software Features						
Element Tools	Point / Line / Circle / Arc / Distance / Angle					
GD&T	Concentricity / Eccentricity / Ovality / Cross-Sectional Area					
Edge Detection	AutoTools / Auto Edge Detection					
Manual Measurement	Yes					
Coordinate System Configuration	Yes					
Element List Editing	Yes					
Colour Measurement System	Optional					
Measurement of Images	Yes					
Report Format	Customizable					
Foot Switch	Optional					

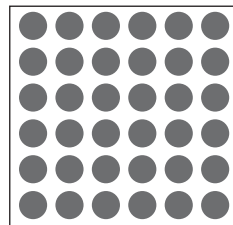
Note: Dual Camera mode also available, Customized sizes are available from 8mm diameter to 150mm diameter.



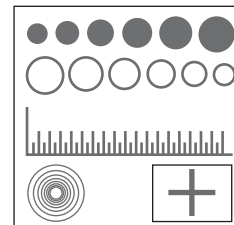
FOOT SWITCH



TOP LIGHT



CALIBRATION MASTER: GRID



CALIBRATION MASTER : UNIVERSAL



ALARM LIGHT

OTHER PRODUCTS



VISION MEASURING MICROSCOPE



TABLE TOP MAGNIFIER



TOOL MAKER MICROSCOPE



PROFILE PROJECTOR



AUTOMATIC VISION MEASURING SYSTEM



COORDINATE MEASURING MACHINE

SIPCON INSTRUMENT INDUSTRIES

PLANT 1 116-B HSIDC, Industrial Estate
Ambala Cantt-133001
Haryana-India

PLANT 2 Plot No.: 280, HSIDC
Industrial Estate, Saha-Ambala
Haryana-India

PHONE +91-171-2699668
+91-171-2699344

FAX +91-171-2699667